

LIMAB[®]

LMS 6045 Length Gauge

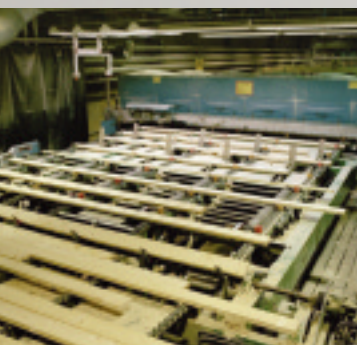


Dependable laser
measurement
gauge with high
performance
and reliability.

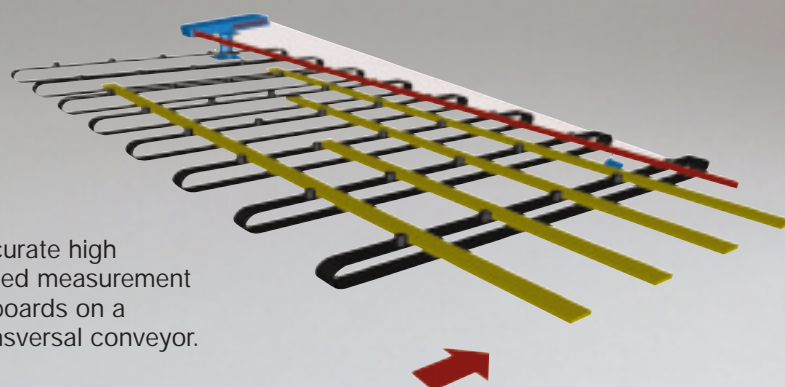
LIMAB®

LMS 6045 Length Gauge

LMS 6045 is easy to install (Plug and go). It helps you to keep an accurate eye on your production.



Control panel
Shows measurement values for function control.

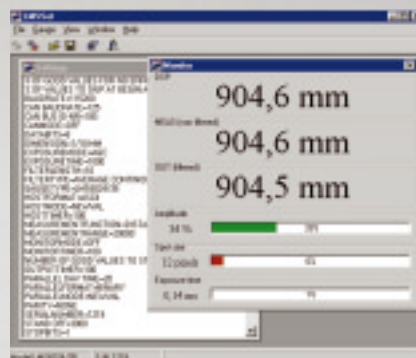


Accurate high speed measurement of boards on a transversal conveyor.

LMS 6045 provides a cost-effective and easy way to measure length of the boards on a transversal conveyor.



Connection module with lockable cover.



Windows® based Set Up Software
To make a Set-Up of the sensors, a Windows based software is supplied with the sensor, together with a communication cable between the sensor and a PC.

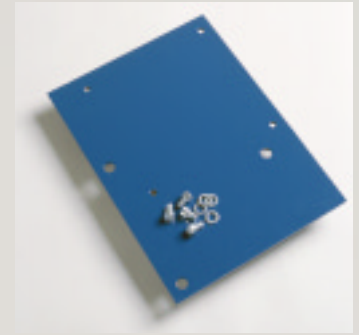


LMS 6045

Length Gauge

LMS 6045 is the successor of the successful LMS 6044. LMS 6045 has digital signal processing, a compact design and is designed for the new "high speed" saw mills.

LMS 6045 measures with high accuracy and is suitable for high speed processing of boards and planks.



It is easy to change from any LMS 6044 model to the new **LMS 6045** due to the compatibility in both electrical and mechanical aspects.

Technical specifications

Laser Class (IEC825) 3B

Power

Supply Voltage 8,5-255 VAC
 Frequency 47-100 Hz
 Power Consumption max 40W

Measuring

Measurement range 4800 mm (188.98")
 Stand off 850 mm (33.46")
 Resolution 1 mm (0.039")
 Exposure time 0.2-100 ms, automatically adjusted
 Height Vision X min / X max 80/55 mm (3.15/2.17")
 Resolution on HOST and parallel output 1 mm (0.039")
 Repeatability $\pm 1,5$ mm within 2σ (0.059")

Dimensional

Weight LMS6045 DSP 35 kg (77lb)
 Weight incl. Bracket 50 kg (110lb)
 Storage temperature 0-70°C (32-158°F)
 Operating temperature 0-40°C (32-104°F)
 Protection class IP 52

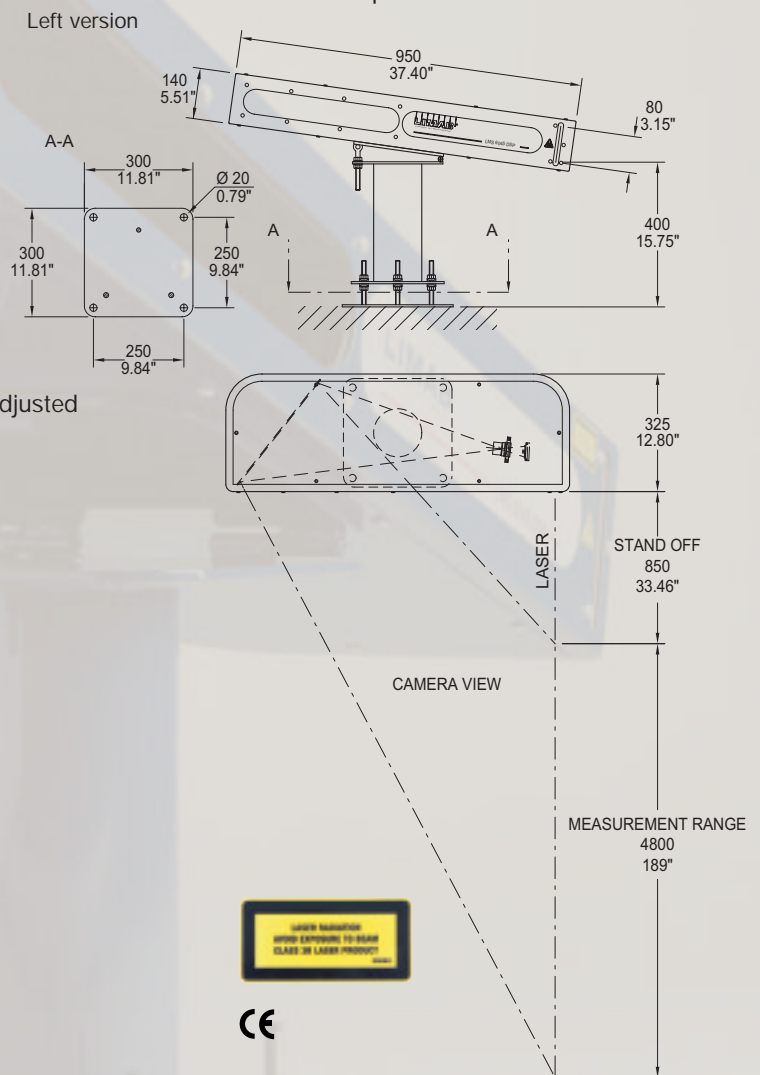
Standard delivery

Right 96205
 Left 96206
 RS 232 HOST – interface
 14 bit Parallel – interface

Options

Analog interface 23106
 Current loop for
 Host interface 23109
 Adapter Plate 6044 to 6045 96207
 Big display 96016
 Photocell 90124

We reserve the right to introduce modifications without prior notice.



LIMAB®

Exportgatan 38 B
 SE-422 46 Hisings Backa, Sweden
 Phone +46-(0)31 58 11 50
 Fax +46-(0)31 58 33 88
 www.limab.com
 e-mail: sales@limab.se