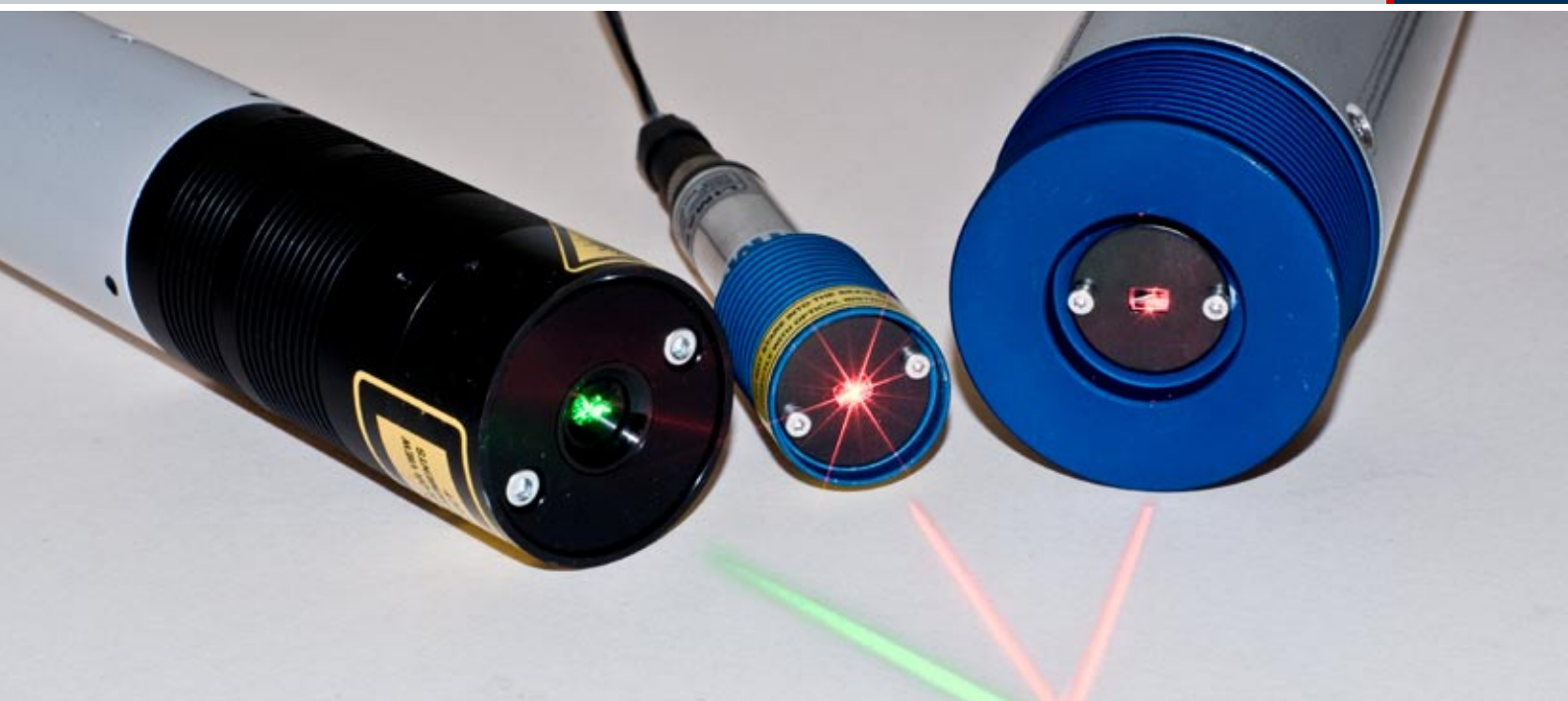


Positioning Lasers



- *Full range of laser guide lights*
- *Designed for tough industrial use*
- *High quality precision optics*
- *Unique design details*
- *More than 25 years experience in laser guide lights*



Technical details

To keep a strong laser line alive for many years, LIMAB lasers are equipped with the newest technology including continuous control of the laser by measuring the laser diode current and temperature.

The lasers are made for harsh industrial environments like sawmills, gypsum mills, board

mills, steel mills, stone production etc. With its tightly sealed dust- and splashproof aluminium tube housing. Integrated protection circuits against voltage transients and over-temperature enhances the life length even more. LIMAB certify that BlueLine with all options is in conformity with the following standards or standardisation documents.

SS-EN 50 081-1 Electric emission in office environment.

SS-EN 50 082-2 Electric immunity in industrial environment.

SS-EN 60 825 Laser Safety.

According to EEC rules 89/336/EEC, 92/31/EEC and 93/68/EEC.

Accessories

The lasers can be mounted on any place when using our brackets.

Standard bracket: For a fixed mounting place pointing to its target.

Adjustable bracket: Wall mounted bracket adjustable to illuminate on its target.



LIMAB Positioning Lasers

Sharp and visible lines together with high reliability are typical for LIMAB laser guide lights.

All our lasers are robust and made for heavy industrial use. LIMAB lasers are well protected against over voltage and transients.

RC Line

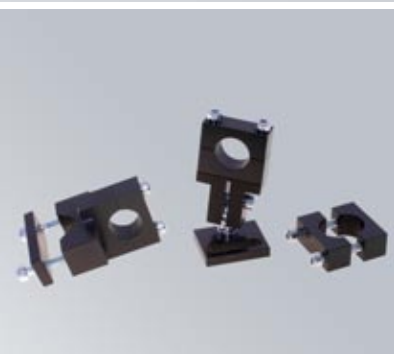
Our most flexible laser line. RC Line offers many combinations with optics, telescopes and line lengths. RC Line has a rugged 54 mm diameter housing with the latest technology including improved ESD-protection, cooling-flange in a rigid aluminium/stainless steel construction for improved heat transportation.

BlueLine

LIMABs most popular laser guide light with the latest technology including improved ESD-protection, coolingflange in a rigid aluminium/stainless steel construction for improved heat transportation. The BlueLine has an external power supply which makes them compact and very price competitive.

GreenLine

The GreenLine is the new generation of green lasers from LIMAB. It's the right choice if you need extremely long lines or have high ambient light. The green laser emits light at a frequency that is much more visible to the human eye than of red lasers.



Rod mounting bracket: Rod mounted bracket adjustable to illuminate on its target.

LIMAB laser guide lights can be supplied with robust contact devices for simple installations with power supplies from 230VAC – 5VDC including 2 m cables as a standard.

Applications

LIMAB laser guide lights are designed for a wide range of applications, for example: wood, stone, rubber, textile, tire, steel, panel and board.

LIMAB

LIMAB has since its foundation in 1979 supplied various industries with state of the art non-contact measurement sensors and systems. Today the company incorporates production, development, service and sales departments.

machinery and personnel to be able to meet the high demands of our customers.

This is a part of our ongoing commitment to provide the market with innovative non-contact measurement solutions.

During the last few years LIMAB has made large investments in

Technical specifications

BlueLine

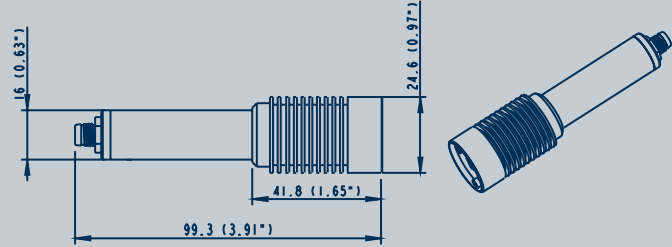
	Part No			
Model	1 mW	5 mW	10 mW	15 mW
Output power	<1 mW	5 mW	10 mW	15 mW
Line length*	2 m	4 m	7 m	10 m
Wave length	635 nm	635 nm	635 nm	635 nm
Laser class	2	2M	2M	2M
Operating temperature	-10°C - +40°C (-14°F - +104°F)			
Output angle	90-110°			
Power supply 230VAC (Part No)	90236	90240	90244	90248
5VDC, 5m cable flying leads (Part No)	90235	90239	90243	90247

Other optics available

Point optics				
Laser class	2	3B	3B	3B

Accessories

Standard bracket	90209	x	x	x	x
Adjustable bracket	90210	x	x	x	x
Bracket for rod (dia.16-25mm) mount.	90252	x	x	x	x

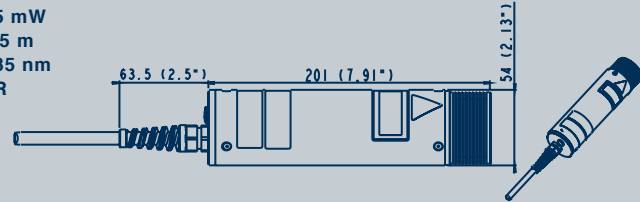


RC Line

	RC 3	RC 7	RC 15	RC 35	RC 15 DL Short Line
RC Laser point, ...D (Part No)	90132	90169	90171	90249	-
RC laser with line optics,..DL (Part No)	90133	90170	90172	90250	90253
Output power	5 mW	10 mW	15 mW	35 mW	15 mW
Line length*	4 m	7 m	12 m	15 m	0.5 m
Wave length	635 nm	635 nm	635 nm	635 nm	635 nm
Laser class, line/point laser	2M/3B	2M/3B	2M/3B	3B	3R
Operating temperature	-10°C - +40°C (-14°F - +104°F)				

Accessories

Standard bracket RCH 01	90055	x	x	x	x	x
Rod br. 16-25mm (0,63-1") RCH 02	90059	x	x	x	x	x
Adjustment plate for RCH 01, JP01	90070	x	x	x	x	x
2 Dimensional adjustment KP 01	90072	x	x	x	x	x

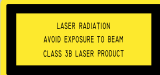
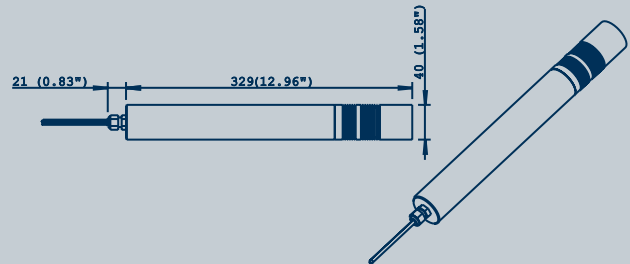


• With normal ambient light conditions

GreenLine 20

Greenline (Part No)	90255
Output power	20mW
Line length, typical	15m (49ft)
Wave length	532nm
Laser class	2M
Operating temperature	0°C - 35°C (32-95°F)
Protection class IP65 NEMA4	
Power supply	95-265VAC

Accessories:	90256	Universal mounting bracket
	90257	Bracket 25mm (0.98") rod
	90258	2D Adjustment plate for use with 90256



We reserve the right to introduce modifications without prior notice.

LIMAB®
CONTROL BY MEASUREMENT

Exportgatan 38 B
SE-422 46 HISINGS BACKA, Sweden
Phone +46 (0)31 - 58 44 00
Fax +46 (0)31 - 58 33 88
sales@limab.se - www.limab.com